

Attachment 1: WIOA Title I Programs Performance Accountability Table

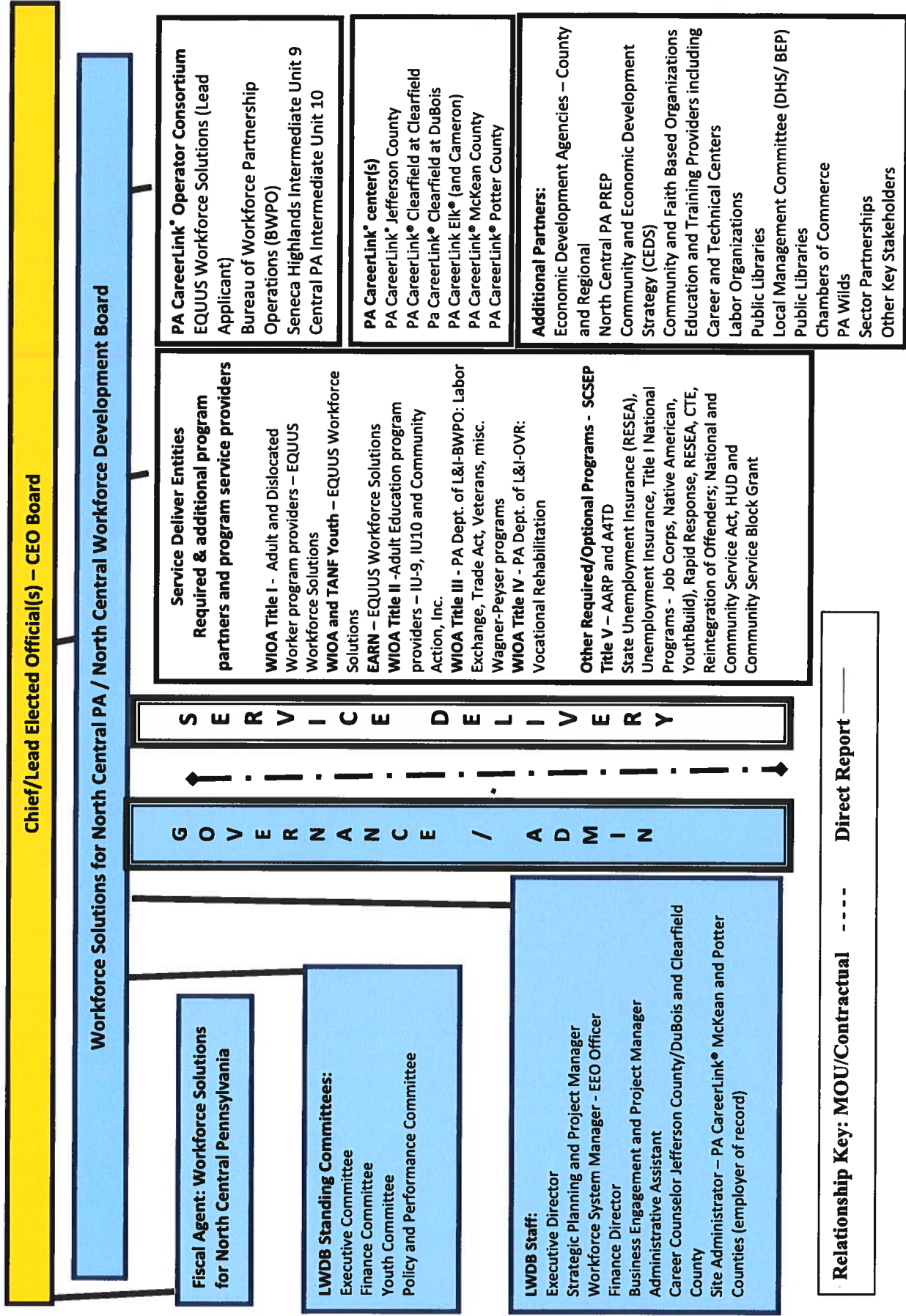
The Pennsylvania Department of Labor & Industry, or L&I, negotiates WIOA Title I programs performance goals with the U. S. Department of Labor on a two-year program cycle, which aligns with the WIOA planning requirement of reviewing WIOA Local Area Plans every two years. In an effort designed to meet or exceed the state WIOA performance goals, PA negotiates these same goals with PA's local workforce development areas, or LWDA, to optimally set each local area's WIOA Title I performance goal levels so that, collectively, the state negotiated performance goals are met or exceeded.

The *WIOA Title I Programs Performance Accountability Table* is for the benefit of the public and must be updated accordingly. Local boards must edit the table's two columns with the appropriate program year(s) to correctly match the most recent* LWDA-negotiated performance goals and attained performance results. This completed table must be publicly posted with the local area plan. The LWDB does not need to perform a WIOA plan modification as this table is revised; email notification to local area workforce development stakeholders will suffice.

LWDA Name: North Central		
WIOA Title I Programs (Adult-Dislocated Worker-Youth) Performance Measures	LWDA's WIOA Title I Programs Negotiated Performance Goals - *Program Year(s): 2020 – 2021	LWDA's WIOA Title I Programs Attained Performance Results - *Program Year: 2020---2021
Employment (Second Quarter after Exit)	Negotiated Goals	Attained Performance
Adult	75%	75%
Dislocated Worker	83%	75.5%
Youth	66%	67.3%
Employment (Fourth Quarter after Exit)	Negotiated Goals	Attained Performance
Adult	75%	71.3%
Dislocated Worker	85%	76.8%
Youth	65%	68.5%
Median Earnings (Second Quarter after Exit)	Negotiated Goals	Attained Performance
Adult	4,800	5,980
Dislocated Worker	7,500	7,789
Youth	2,800	4,324
Credential Attainment Rate	Negotiated Goals	Attained Performance
Adult	75%	78.9%
Dislocated Worker	70%	82.9%
Youth	65%	37.5%
Measurable Skill Gains	Negotiated Goals	Attained Performance
Adult	42%	70.9%
Dislocated Worker	30%	79.8%
Youth	35%	53.7%

Attachment 2: PY 2021-2024 WIOA Multi-Year Local Area Plan: – North Central Workforce Development System Organizational Chart – Modification 1

Local Workforce Development Area name: _____ North Central _____ Effective Date: _____ April 6, 2022



Local Workforce Development Boards (LWDB) are requested to publicly post the Local Workforce Development Area Workforce System Organizational Chart. The LWDB should ensure that the org chart is a reasonable reflection of the local area workforce system. If the Program Partner/Provider List is posted the need for program partner details is lessened in the org chart. Local area plan modifications concerning this subject matter are not required to be submitted to the Department if the chart is posted on the LWDB public website. Page 1 of 1

Attachment 3: PA CareerLink® Workforce Service Delivery System Program Partner/Provider List

Local Workforce Development Area name: North Central – Pa CareerLink®-Elk County

Effective Date: July 1, 2021

Program Name	Program Authorization	Local Area Partner/Provider
POC address	POC telephone	POC website/email
Adult, Dislocated Worker, and Youth Employment and Training Activities	WIOA Title I, Subtitle B – Youth, Adult, and Dislocated Worker Employment and Training Activities	Equus Workforce Solutions
245 Depot Street St Marys PA 15857	814-834-2857	www.equusworks.com bbrunner@pa-cl.com
Vocational Rehabilitation (VR) Program	WIOA Title IV – Vocational Rehabilitation State Grant Programs	PA Department of Labor & Industry: Office of Vocational Rehabilitation – DuBois District Office
199 Beaver Drive DuBois, PA 15801	814-371-7340	http://www.dli.pa.gov/Individuals/Disability-Services/ovr/ ; chpalmer@pa.gov
Unemployment Compensation Board of Review	Section 502 of the Pennsylvania Unemployment Compensation Law	PA Department of Labor & Industry: UC Board of Review
651 Boas Street Room 1116 Harrisburg PA 17121	717-787-5122	Randall Brandes, Appeals System Administrator rbrandes@pa.gov
Unemployment Compensation	Pennsylvania Unemployment Compensation Law	PA Department of Labor & Industry: Office of UC Service Centers
651 Boas Street Room 625	717-783-1951	Nsungwe Shamatutu, Director

Harrisburg PA 17121		nshamatutu@pa.gov www.uc.pa.gov
WIOA Program Provision to Local Workforce Development Areas	WIOA Title III – Programs Authorized Under the Wagner Peyser Act – Employment Services	PA Department of Labor & Industry: Bureau of Workforce Partnership and Operations (BWPO)
329 Pine Street Williamsport, PA 17701	570-327-3501	bruiones@pa.gov ; www.dli.state.pa.us
The Adult Education and Family Literacy Act Program	WIOA Title II	Seneca Highlands Intermediate Unit 9
119 Mechanic Street Smethport, PA 16749	814-887-5512	kdavis@iu9.org ; www.iu9.org
Jobs for Veterans State Grant (JVSG)	Chapter 41 of Title 38, United States Code	PA Department of Labor & Industry: Bureau of Workforce Partnership and Operations (BWPO)
329 Pine Street Williamsport, PA 17701	570-327-3501	bruiones@pa.gov ; www.dli.state.pa.us
Trade Adjustment Assistance	Chapter 2 of Title II of the Trade Act of 1974	PA Department of Labor & Industry: Bureau of Workforce Partnership and Operations (BWPO)
329 Pine Street Williamsport, PA 17701	570-327-3501	bruiones@pa.gov ; www.dli.state.pa.us
Temporary Assistance for Needy Families (TANF)	Part A of Title IV of the Social Security Act	Department of Human Services

625 Forster St., Harrisburg, PA 17120	717-783-5818	www.dhs.pa.gov ; pcopeland@pa.gov;
Rapid Response	WIOA Title I, Subtitle B – Dislocated Worker Rapid Response Funds	PA Department of Labor & Industry: Bureau of Workforce Partnership and Operations (BWPO)
329 Pine Street Williamsport, PA 17701	570-327-3501	brujaones@pa.gov ; www.dli.state.pa.su

Attachment 3: PA CareerLink® Workforce Service Delivery System Program Partner/Provider List

Local Workforce Development Area name: North Central – Pa CareerLink®-Cameron County

Effective Date: July 1, 2021

Program Name	Program Authorization	Local Area Partner/Provider
POC address	POC telephone	POC website/email
Adult, Dislocated Worker, and Youth Employment and Training Activities	WIOA Title I, Subtitle B – Youth, Adult, and Dislocated Worker Employment and Training Activities	Equus Workforce Solutions
245 Depot Street St Marys PA 15857	814-834-2857	www.equusworks.com bbrunner@pa-cl.com
Vocational Rehabilitation (VR) Program	WIOA Title IV – Vocational Rehabilitation State Grant Programs	PA Department of Labor & Industry: Office of Vocational Rehabilitation – DuBois District Office
199 Beaver Drive DuBois, PA 15801	814-371-7340	http://www.dli.pa.gov/Individuals/Disability-Services/ovr/ ; chpalmer@pa.gov
Unemployment Compensation Board of Review	Section 502 of the Pennsylvania Unemployment Compensation Law	PA Department of Labor & Industry: UC Board of Review
651 Boas Street Room 1116 Harrisburg PA 17121	717-787-5122	Randal Brandes, Appeals System Administrator rbrandes@pa.gov
Unemployment Compensation	Pennsylvania Unemployment Compensation Law	PA Department of Labor & Industry: UC Service Centers
651 Boas Street Room 625 Harrisburg PA 17121	717-783-1951	Nsungwe Shamatutu, Director nshamatutu@pa.gov

		www.uc.pa.gov
WIOA Program Provision to Local Workforce Development Areas	WIOA Title III – Programs Authorized Under the Wagner Peyser Act – Employment Services	PA Department of Labor & Industry: Bureau of Workforce Partnership and Operations (BWPO)
329 Pine Street Williamsport, PA 17701	570-327-3501	bruiones@pa.gov; www.dli.state.pa.us
The Adult Education and Family Literacy Act Program	WIOA Title II	Seneca Highlands Intermediate Unit 9
119 Mechanic Street Smethport, PA 16749	814-887-5512	kdavis@iu9.org; www.iu9.org
Jobs for Veterans State Grant (JVSG)	Chapter 41 of Title 38, United States Code	PA Department of Labor & Industry: Bureau of Workforce Partnership and Operations (BWPO)
329 Pine Street Williamsport, PA 17701	570-327-3501	bruiones@pa.gov; www.dli.state.pa.us
Trade Adjustment Assistance	Chapter 2 of Title II of the Trade Act of 1974	PA Department of Labor & Industry: Bureau of Workforce Partnership and Operations (BWPO)
329 Pine Street Williamsport, PA 17701	570-327-3501	bruiones@pa.gov; www.dli.state.pa.us
Temporary Assistance for Needy Families (TANF)	Part A of Title IV of the Social Security Act	Department of Human Services

625 Forster St., Harrisburg, PA 17120	717-783-5818	www.dhs.pa.gov ; pcopeland@pa.gov;
Rapid Response	WIOA Title I, Subtitle B – Dislocated Worker Rapid Response Funds	PA Department of Labor & Industry: Bureau of Workforce Partnership and Operations (BWPO)
329 Pine Street Williamsport, PA 17701	570-327-3501	bruiones@pa.gov ; www.dli.state.pa.su

Attachment 3: PA CareerLink® Workforce Service Delivery System Program Partner/Provider List

Local Workforce Development Area name: North Central – Pa CareerLink® McKean County

Effective Date: July 1, 2021

Program Name	Program Authorization	Local Area Partner/Provider
POC address	POC telephone	POC website/email
Adult, Dislocated Worker, and Youth Employment and Training Activities	WIOA Title I, Subtitle B – Youth, Adult, and Dislocated Worker Employment and Training Activities	Equus Workforce Solutions
245 Depot Street St Marys PA 15857	814-834-2857	www.equusworks.com bbrunner@pa-cl.com
Vocational Rehabilitation (VR) Program	WIOA Title IV – Vocational Rehabilitation State Grant Programs	PA Department of Labor & Industry: Office of Vocational Rehabilitation – DuBois District Office
199 Beaver Drive DuBois, PA 15801	814-371-7340	http://www.dli.pa.gov/Individuals/Disability-Services/ovr/ ; chpalmer@pa.gov
Unemployment Compensation Board of Review	Section 502 of the Pennsylvania Unemployment Compensation Law	PA Department of Labor & Industry: UC Board of Review
651 Boas Street Room 1116 Harrisburg PA 17121	717-787-5122	Randall Brandes, Appeals System Administrator rbrandes@pa.gov
Unemployment Compensation	Pennsylvania Unemployment Compensation Law	PA Department of Labor & Industry: UC Service Centers
		Nsungwe Shamatutu, Director

651 Boas Street Room 625 Harrisburg PA 17121	717-783-1951	nshamatutu@pa.gov www.uc.pa.gov
WIOA Program Provision to Local Workforce Development Areas	WIOA Title III – Programs Authorized Under the Wagner Peyser Act – Employment Services	PA Department of Labor & Industry: Bureau of Workforce Partnership and Operations (BWPO)
329 Pine Street Williamsport, PA 17701	570-327-3501	bruiones@pa.gov ; www.dli.state.pa.us
The Adult Education and Family Literacy Act Program	WIOA Title II	Seneca Highlands Intermediate Unit 9
119 Mechanic Street Smethport, PA 16749	814-887-5512	kdavis@iu9.org ; www.iu9.org
Jobs for Veterans State Grant (JVSG)	Chapter 41 of Title 38, United States Code	PA Department of Labor & Industry: Bureau of Workforce Partnership and Operations (BWPO)
329 Pine Street Williamsport, PA 17701	570-327-3501	bruiones@pa.gov ; www.dli.state.pa.us
Trade Adjustment Assistance	Chapter 2 of Title II of the Trade Act of 1974	PA Department of Labor & Industry: Bureau of Workforce Partnership and Operations (BWPO)
329 Pine Street Williamsport, PA 17701	570-327-3501	bruiones@pa.gov ; www.dli.state.pa.us

Temporary Assistance for Needy Families (TANF)	Part A of Title IV of the Social Security Act	Department of Human Services
625 Forster St., Harrisburg, PA 17120	717-783-5818	www.dhs.pa.gov; pcopeland@pa.gov;
Rapid Response	WIOA Title I, Subtitle B – Dislocated Worker Rapid Response Funds	PA Department of Labor & Industry: Bureau of Workforce Partnership and Operations (BWPO)
329 Pine Street Williamsport, PA 17701	570-327-3501	bruiones@pa.gov; www.dli.state.pa.us

Attachment 3: PA CareerLink® Workforce Service Delivery System Program Partner/Provider List

Local Workforce Development Area name: North Central – Pa CareerLink® Potter County

Effective Date: July 1, 2021

Program Name	Program Authorization	Local Area Partner/Provider
POC address	POC telephone	POC website/email
Adult, Dislocated Worker, and Youth Employment and Training Activities	WIOA Title I, Subtitle B – Youth, Adult, and Dislocated Worker Employment and Training Activities	Equus Workforce Solutions
245 Depot Street St Marys PA 15857	814-834-2857	www.equusworks.com bbrunner@pa-cl.com
Vocational Rehabilitation (VR) Program	WIOA Title IV – Vocational Rehabilitation State Grant Programs	PA Department of Labor & Industry: Office of Vocational Rehabilitation – DuBois District Office
208 W. 3 rd Street Williamsport, PA 17701	570-327-3600	http://www.dli.pa.gov/Individuals/Disability-Services/ovr/ ; sswartz@pa.gov
Unemployment Compensation	Pennsylvania Unemployment Compensation Law	PA Department of Labor & Industry: UC Service Centers
651 Boas Street Room 1116 Harrisburg PA 17121	717-783-1951	Nsungwe Shamatutu, Director nshamatutu@pa.gov www.uc.pa.gov
WIOA Program Provision to Local Workforce Development Areas	WIOA Title III – Programs Authorized Under the Wagner Peyser Act – Employment Services	PA Department of Labor & Industry: Bureau of Workforce Partnership and Operations (BWPO)

329 Pine Street Williamsport, PA 17701	570-327-3501	bruiones@pa.gov ; www.dli.state.pa.us
The Adult Education and Family Literacy Act Program	WIOA Title II	Seneca Highlands Intermediate Unit 9
119 Mechanic Street Smethport, PA 16749	814-887-5512	kdavis@iu9.org ; www.iu9.org
Trade Adjustment Assistance	Chapter 2 of Title II of the Trade Act of 1974	PA Department of Labor & Industry: Bureau of Workforce Partnership and Operations (BWPO)
329 Pine Street Williamsport, PA 17701	570-327-3501	bruiones@pa.gov ; www.dli.state.pa.us
Temporary Assistance for Needy Families (TANF)	Part A of Title IV of the Social Security Act	Department of Human Services
625 Forster St., Harrisburg, PA 17120	717-783-5818	www.dhs.pa.gov ; pcopeland@pa.gov ;
Rapid Response	WIOA Title I, Subtitle B – Dislocated Worker Rapid Response Funds	PA Department of Labor & Industry: Bureau of Workforce Partnership and Operations (BWPO)
329 Pine Street Williamsport, PA 17701	570-327-3501	bruiones@pa.gov ; www.dli.state.pa.us
SCEP		A4TD
	802-524-3000 ext 117	Mary Branagan, Director of Program Affairs, mbrabagan@a4td.org

Attachment 3: PA CareerLink® Workforce Service Delivery System Program Partner/Provider List

Local Workforce Development Area name: North Central – Pa CareerLink® Clearfield County at DuBois
Effective Date: July 1,-2021

Program Name	Program Authorization	Local Area Partner/Provider
POC address	POC telephone	POC website/email
Adult, Dislocated Worker, and Youth Employment and Training Activities	WIOA Title I, Subtitle B – Youth, Adult, and Dislocated Worker Employment and Training Activities	Equus Workforce Solutions
245 Depot Street St Marys PA 15857	814-834-2857	www.equusworks.com bbrunner@pa-cl.com
Vocational Rehabilitation (VR) Program	WIOA Title IV – Vocational Rehabilitation State Grant Programs	PA Department of Labor & Industry: Office of Vocational Rehabilitation – DuBois District Office
199 Beaver Drive DuBois, PA 15801	814-371-7340	http://www.dli.pa.gov/Individuals/Disability-Services/ovr/ ; chpalmer@pa.gov
Unemployment Compensation Board of Review	Section 502 of the Pennsylvania Unemployment Compensation Law	PA Department of Labor & Industry: UC Board of Review
651 Boas Street Room 1116 Harrisburg PA 17121	717-787-5122	Randall Brandes, Appeals System Administrator rbrandes@pa.gov
Unemployment Compensation	Pennsylvania Unemployment Compensation Law	PA Department of Labor & Industry: UC Service Centers
651 Boas Street Room 625	717-783-1951	Nsungwe Shamatutu, Director

Harrisburg PA 17121		nshamatutu@pa.gov www.uc.pa.gov
WIOA Program Provision to Local Workforce Development Areas	WIOA Title III – Programs Authorized Under the Wagner Peyser Act – Employment Services	PA Department of Labor & Industry: Bureau of Workforce Partnership and Operations (BWPO)
329 Pine Street Williamsport, PA 17701	570-327-3501	bruiones@pa.gov ; www.dli.state.pa.us
Jobs for Veterans State Grant (JVSG)	Chapter 41 of Title 38, United States Code	PA Department of Labor & Industry: Bureau of Workforce Partnership and Operations (BWPO)
329 Pine Street Williamsport, PA 17701	570-327-3501	bruiones@pa.gov ; www.dli.state.pa.us
Trade Adjustment Assistance	Chapter 2 of Title II of the Trade Act of 1974	PA Department of Labor & Industry: Bureau of Workforce Partnership and Operations (BWPO)
329 Pine Street Williamsport, PA 17701	570-327-3501	bruiones@pa.gov ; www.dli.state.pa.us
Temporary Assistance for Needy Families (TANF)	Part A of Title IV of the Social Security Act	Department of Human Services
625 Forster St., Harrisburg, PA 17120	717-783-5818	www.dhs.pa.gov ; pcpeland@pa.gov;
Rapid Response	WIOA Title I, Subtitle B – Dislocated Worker Rapid Response Funds	PA Department of Labor & Industry: Bureau of Workforce Partnership and Operations (BWPO)

329 Pine Street Williamsport, PA 17701	570-327-3501	bruiones@pa.gov ; www.dli.state.pa.su
SCEP		A4TD
	802-524-3000 ext 117	Mary Branagan, Director of Program Affairs, mbrabagan@a4td.org

Attachment 3: PA CareerLink® Workforce Service Delivery System Program Partner/Provider List

Local Workforce Development Area name: North Central–Pa CareerLink® Clearfield County – Clearfield
Effective Date: July 1, 2021

Program Name	Program Authorization	Local Area Partner/Provider
POC address	POC telephone	POC website/email
Adult, Dislocated Worker, and Youth Employment and Training Activities	WIOA Title I, Subtitle B – Youth, Adult, and Dislocated Worker Employment and Training Activities	ResCare Workforce Services
245 Depot Street St Marys PA 15857	814-834-2857	www.rescare.com ; bbrunner@pa-cl.com
Vocational Rehabilitation (VR) Program	WIOA Title IV – Vocational Rehabilitation State Grant Programs	PA Department of Labor & Industry: Office of Vocational Rehabilitation – DuBois District Office
199 Beaver Drive DuBois, PA 15801	814-371-7340	http://www.dli.pa.gov/Individuals/Disability-Services/ovr/ ; chpalmer@pa.gov
Community Service Block Grants	Community Services Block Grant Act – Employment and Training Activities	Central PA Community Action, Inc.
270 East Cherry Street Clearfield, PA 16830	814-765-1551	www.cpcaa.net ; shawthorne@cpcaa.net
Unemployment Compensation Board of Review	Section 502 of the Pennsylvania Unemployment Compensation Law	PA Department of Labor & Industry: UC Board of Review
651 Boas Street Room 1116 Harrisburg PA 17121	717-787-5122	Randall Brandes, Appeals System Administrator rbrandes@pa.gov

		Ra-li-ucbr-CentralOf@pa.gov
Unemployment Compensation	Pennsylvania Unemployment Compensation Law	PA Department of Labor & Industry: UC Service Centers
651 Boas Street Room 625 Harrisburg PA 17121	717-783-1951	Nsungwe Shamatutu, Director nshamatutu@pa.gov www.uc.pa.gov
The Adult Education and Family Literacy Act Program	WIOA Title II	Central Intermediate Unit 10
1125 Linden Street Clearfield, PA 16830	814-765-8118 x303	www.ciu10.org; jwitherite@ciu10.org;
Foreign Labor Certification	Immigration and Nationality Act (INA)	PA Department of Labor & Industry: Bureau of Workforce Partnership and Operations (BWPO)
329 Pine Street Williamsport, PA 17701	570-327-3501	brujones@pa.gov; www.dli.state.pa.us
Community Service Block Grant		Central Pennsylvania Community Action, Inc.
270 East Cherry Street Clearfield PA 16830	814-765-1551	William Zupich, bzip@cpcaa.net
WIOA Program Provision to Local Workforce Development Areas	WIOA Title III – Programs Authorized Under the Wagner Peyser Act – Employment Services	PA Department of Labor & Industry: Bureau of Workforce Partnership and Operations (BWPO)
329 Pine Street	570-327-3501	brujones@pa.gov; www.dli.state.pa.us

Williamsport, PA 17701		
Jobs for Veterans State Grant (JVSG)	Chapter 41 of Title 38, United States Code	PA Department of Labor & Industry: Bureau of Workforce Partnership and Operations (BWPO)
329 Pine Street Williamsport, PA 17701	570-327-3501	bruiones@pa.gov; www.dli.state.pa.us
Trade Adjustment Assistance	Chapter 2 of Title II of the Trade Act of 1974	PA Department of Labor & Industry: Bureau of Workforce Partnership and Operations (BWPO)
329 Pine Street Williamsport, PA 17701	570-327-3501	bruiones@pa.gov; www.dli.state.pa.us
Temporary Assistance for Needy Families (TANF)	Part A of Title IV of the Social Security Act	Department of Human Services
625 Forster St., Harrisburg, PA 17120	717-783-5818	www.dhs.pa.gov; pcopeland@pa.gov;
Rapid Response	WIOA Title I, Subtitle B – Dislocated Worker Rapid Response Funds	PA Department of Labor & Industry: Bureau of Workforce Partnership and Operations (BWPO)
329 Pine Street Williamsport, PA 17701	570-327-3501	bruiones@pa.gov; www.dli.state.pa.us
SCEP		A4TD
	802-524-3000 ext 117	Mary Branagan, Director of Program Affairs, mbrabagan@a4td.org

Attachment 3: PA CareerLink® Workforce Service Delivery System Program Partner/Provider List

Local Workforce Development Area name: North Central–Pa CareerLink® Jefferson County

Effective Date: July 1, 2021

Program Name	Program Authorization	Local Area Partner/Provider
POC address	POC telephone	POC website/email
Adult, Dislocated Worker, and Youth Employment and Training Activities	WIOA Title I, Subtitle B – Youth, Adult, and Dislocated Worker Employment and Training Activities	Equus Workforce Solutions
245 Depot Street St Marys PA 15857	814-834-2857	www.equusworks.com bbrunner@pa-cl.com
Vocational Rehabilitation (VR) Program	WIOA Title IV – Vocational Rehabilitation State Grant Programs	PA Department of Labor & Industry: Office of Vocational Rehabilitation – DuBois District Office
199 Beaver Drive DuBois, PA 15801	814-371-7340	http://www.dli.pa.gov/Individuals/Disability-Services/ovr/ ; chpalmer@pa.gov
Unemployment Compensation Board of Review	Section 502 of the Pennsylvania Unemployment Compensation Law	PA Department of Labor & Industry: UC Board of Review
651 Boas Street Room 1116 Harrisburg PA 17121	717-787-5122	Randall Brandes, Appeals System Administrator rbrandes@pa.gov
Unemployment Compensation	Pennsylvania Unemployment Compensation Law	PA Department of Labor & Industry: UC Service Center
651 Boas Street Room 625 Harrisburg PA 17121	717-783-1951	Nsungwe Shamatutu, Director nshamatutu@pa.gov

		www.uc.pa.gov
WIOA Program Provision to Local Workforce Development Areas	WIOA Title III – Programs Authorized Under the Wagner Peyser Act – Employment Services	PA Department of Labor & Industry: Bureau of Workforce Partnership and Operations (BWPO)
329 Pine Street Williamsport, PA 17701	570-327-3501	bruiones@pa.gov; www.dli.state.pa.us
Jobs for Veterans State Grant (JVSG)	Chapter 41 of Title 38, United States Code	PA Department of Labor & Industry: Bureau of Workforce Partnership and Operations (BWPO)
329 Pine Street Williamsport, PA 17701	570-327-3501	bruiones@pa.gov; www.dli.state.pa.us
Trade Adjustment Assistance	Chapter 2 of Title II of the Trade Act of 1974	PA Department of Labor & Industry: Bureau of Workforce Partnership and Operations (BWPO)
329 Pine Street Williamsport, PA 17701	570-327-3501	bruiones@pa.gov; www.dli.state.pa.us
Temporary Assistance for Needy Families (TANF)	Part A of Title IV of the Social Security Act	Department of Human Services
625 Forster St., Harrisburg, PA 17120	717-783-5818	www.dhs.pa.gov; pcopeland@pa.gov;
Community Service Block Grant		Community Action, Inc.
105 Grace Way	814-938-3302	Sue Fusco, sfusco@jccap.org

Punxsutawney, PA 15767		
SCEP		AARP Foundation
220 Main Street Butler PA 16001	724-282-0893	George Forster Jr., gforster@aarp.org

Attachment 4: Local Workforce Development System Supporting Data

Local area plans have multiple sections requiring various data methodologies needed to support narrative. When documenting data methodologies, plan drafters may reference the data location in the local area plan prompt narrative and move referenced data (e.g., charts, tables, etc.) to this attachment. The *Supporting Data* attachment must be submitted with the local area plan and publicly posted with all other supporting documentation as referenced in the WIOA Regional and Local Area Plan Guide.

Local boards must enter the prerequisite information (i.e. LWDA name, section number with prompt, input data referenced in the plan's prompt narrative and cite data source) if using this form.

If a local board does not use this form, the LWDB must make note on this attachment that "all data is cited in the local plan narrative."

LWDA Name: Workforce Solutions for North Central PA – North Central Workforce Development Board

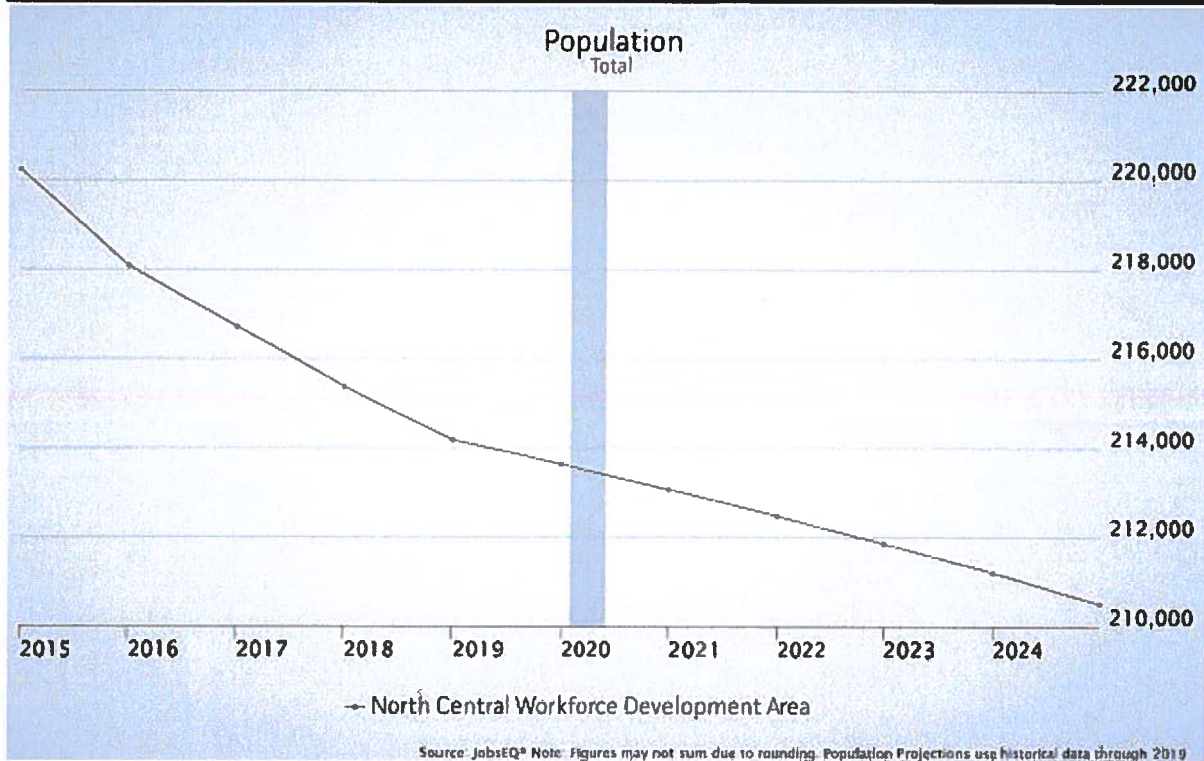
Section 1.1 – Figure 1: Population Demographic Profile

	Percent			Value		
	North Central Workforce Development Area	Pennsylvania	USA	North Central Workforce Development Area	Pennsylvania	USA
Demographics						
Population (ACS)	—	—	—	218,337	12,791,181	322,903,030
Male	51.1%	49.0%	49.2%	111,590	6,263,189	158,984,190
Female	48.9%	51.0%	50.8%	106,747	6,527,992	163,918,840
Median Age ²	—	—	—	44.8	40.7	37.9
Under 18 Years	19.6%	20.9%	22.8%	42,880	2,675,330	73,553,240
18 to 24 Years	7.8%	9.3%	9.6%	17,119	1,194,488	30,903,719
25 to 34 Years	11.2%	13.0%	13.8%	24,368	1,667,748	44,567,976
35 to 44 Years	11.6%	11.7%	12.6%	25,265	1,495,222	40,763,210
45 to 54 Years	14.3%	13.5%	13.2%	31,235	1,731,294	42,589,573
55 to 64 Years	15.4%	14.1%	12.8%	33,555	1,797,238	41,286,731
65 to 74 Years	10.9%	9.7%	8.8%	23,826	1,236,019	28,535,419
75 Years, and Over	9.2%	7.8%	6.4%	20,089	993,842	20,703,162
Race: White	96.1%	80.8%	72.7%	209,857	10,341,442	234,904,818
Race: Black or African American	1.7%	11.1%	12.7%	3,764	1,423,319	40,916,113
Race: American Indian and Alaska Native	0.2%	0.2%	0.8%	422	24,847	2,699,073
Race: Asian	0.4%	3.3%	5.4%	966	427,892	17,574,550
Race: Native Hawaiian and Other Pacific Islander	0.0%	0.0%	0.2%	36	4,107	582,718
Race: Some Other Race	0.3%	2.0%	4.9%	610	258,694	15,789,961
Race: Two or More Races	1.2%	2.4%	3.2%	2,682	310,880	10,435,797
Hispanic or Latino (of any race)	1.9%	7.1%	17.8%	4,097	905,156	57,517,935

Source: JobsEQ® Chmura Analytics

Attachment 4: Local Workforce Development System Supporting Data

Section 1.1 – Figure 2: Population Demographic Profile



Source: JobsEQ® Chmura Analytics

Section 1.1 – Figure 3: Educational Attainment – 25 and older

Educational Attainment of Population (Ages 25 and older) by County – NCWDA					
County	Total	Less than high school graduate:	High school graduate (incl. equivalency):	Some college or associate's degree:	Bachelor's degree or higher:
Cameron	3,548	331 (9.3%)	1,714 (48.3%)	1,018 (28.7%)	485 (13.7%)
Clearfield	59,121	7,557(12.8%)	29,255 (49.5%)	13,397 (22.7%)	8,912(15.1%)
Elk	22,240	1,712(7.7%)	10,679 (48%)	5,497 (24.7%)	4,352 (19.6%)
Jefferson	31,227	3,330 (10.7)	15,951(51.1%)	6,971(22.3%)	4,975(15.9%)
McKean	29,394	2,422(8.2%)	13,972(47.5%)	7,455(25.4%)	5,545 (18.9%)
Potter	12,125	1,456(12%)	5,704 (47%)	3,101(25.6%)	1,864(15.4%)
Totals	157,655	16,808 (10.6%)	77,275 (49%)	37,439 (24%)	26,133 (17%)

Source: Center for Workforce Information and Analysis

Attachment 4: Local Workforce Development System Supporting Data

Section 1.1 – Figure 4: Comparison of Educational Attainment with State and Nation

Educational Attainment – Comparing North Central WDA to the State and Country						
	North Central WDA	Pennsylvania	United States	North Central WDA	Pennsylvania	United States
No High School Diploma	8.6%	8.1%	11.2%	9,785	540,364	18,885,967
High School Graduate	47.0%	32.4%	25.8%	53,816	2,169,402	43,699,272
Some College, No Degree	15.4%	16.6%	21.0%	17,617	1,113,849	35,525,113
Associate's Degree	11.7%	9.4%	9.1%	13,400	629,316	15,389,737
Bachelor's Degree	11.9%	20.8%	20.8%	13,616	1,395,023	35,261,652
Postgraduate Degree	5.4%	12.6%	12.1%	6,189	843,548	20,445,749

Source: jobsEQ®, <http://www.chinuraecon.com/jobseq>

Copyright © «cea copyright» Chinura Economics & Analytics, All Rights Reserved.

3

Section 1.1 – Figure 5 Educational Distribution by Educational Attainment Level

Area	Educational Grouping	Employment (2018)	Projected Employment (2028)
North Central	Advanced degree	2,570	2,750
North Central	Bachelor's degree	13,220	13,760
North Central	Associate degree	1,900	1,960
North Central	PS education or experience	18,650	19,030
North Central	Long-term training	4,400	4,450
North Central	Moderate-term OJT	17,010	16,340
North Central	Short-term OJT	33,710	33,720

Source: Center for Workforce Information and Analysis

Attachment 4: Local Workforce Development System Supporting Data

Section 1.1 – Figure 6 Labor Force Statistics. North Central WDA, 2019

Annual Average Labor Force Statistics, North Central WDA, 2019				
Annual Average	Labor Force	Employed	Unemployed	Unemployment Rate
2019	98,900	93,800	5,100	5.1
Seasonally Adjusted Labor Force Statistics, North Central WDA, 2020				
Month	Labor Force	Employed	Unemployed	Unemployment Rate
January	99,800	93,700	6,100	6.1
February	99,800	93,800	6,100	6.1
March	100,100	92,800	7,300	7.3
April	101,400	82,600	18,900	18.6
May	100,000	85,400	14,500	14.5
June	96,200	83,500	12,700	13.2
July	96,300	84,000	12,200	12.7
August	95,600	85,600	10,000	10.5
September	97,300	89,200	8,100	8.3
October	97,000	89,900	7,100	7.3
Source: Local Area Unemployment Statistics (LAUS)				

Section 1.1 – Figure 7 Cost of Living Comparison

Cost of Living Information			
	Annual Average Salary	Cost of Living Index (Base US)	US Purchasing Power
North Central Workforce Development Area	\$41,193	94.0	\$43,828
Pennsylvania	\$57,240	106.5	\$53,758
USA	\$58,849	100.0	\$58,849

Source: [JobsEQ®](#)

Data as of 2020Q2

Cost of Living per C2ER, data as of 2020q1, imputed by Chmura where necessary.

Section 1.1 – Figure 8: Housing - North Central Workforce Development Area

Housing						
Total Housing Units	—	—	—	118,286	5,673,599	136,384,292
Median House Value (of owner-occupied units) ²	—	—	—	\$93,744	\$174,100	\$204,900
Homeowner Vacancy	2.2%	1.6%	1.7%	1,557	57,564	1,304,850
Rental Vacancy	5.6%	5.8%	6.0%	1,265	96,671	2,822,053
Renter-Occupied Housing Units (% of Occupied Units)	23.8%	31.0%	36.2%	21,273	1,557,665	43,285,318
Occupied Housing Units with No Vehicle Available (% of Occupied Units)	8.1%	11.0%	8.7%	7,227	552,690	10,424,934

Source: [JobsEQ®](#)

Data as of 2020Q2

Cost of Living per C2ER, data as of 2020q1, imputed by Chmura where

Attachment 4: Local Workforce Development System Supporting Data

Section 1.1 – Figure 9: Poverty by county

Poverty and Labor Force Status (Ages 16 and older) by County								
County	Total Population Age 16 and Older	Individuals Below the Poverty Level Age 16 and Older						
		Total Ind.	Poverty Rate	Employed	Unemployed	Not In Labor Force	Unemployment Rate	Labor Force Participation Rate
Cameron	3,935	514	13.1%	170	26	318	13.3%	38.1%
Clearfield	61,278	7,548	12.3%	1,842	693	5,013	27.3%	33.6%
Elk	24,784	2,134	8.6%	770	299	1,065	28.0%	50.1%
Jefferson	34,962	4,555	13.0%	1,384	154	3,017	10.0%	33.8%
McKean	31,572	4,303	13.6%	1,216	463	2,624	27.6%	39.0%
Potter	13,514	1,604	11.9%	379	119	1,106	23.9%	31.0%
Total	161,045	20,658	12.0%	5,761	1,754	13,143	21.6%	37.6%

Section 1.1 – Figure 10: Disability and Labor Force

DISABILITY AND LABOR FORCE STATUS OF WORKING AGE POPULATION (AGES 16-24) BY COUNTY							
County	Total Population	# Ind. with Disability	% with Disability	Unemployment Rate		Labor Force Participation Rate	
				No Disability	Disability	No Disability	Disability
Cameron	2,602	393	15.1%	36%	14.9%	82.1%	34.1%
Clearfield	44,229	7,120	16.1%	5.7%	15.4%	83.3%	40.0%
Elk	17,825	2,275	12.8%	4.0%	9.4%	87.8%	48.3%
Jefferson	25,355	3,462	13.7%	3.6%	8.5%	80.8%	38.7%
McKean	23,929	3,751	15.7%	5.4%	13.9%	81.6%	40.8%
Potter	9,273	1,496	16.1%	5.6%	15.4%	78.2%	29.5%
TOTALS	123,213	18,497	14.9%	10.5%	12.9%	82.3%	38.6%

Attachment 4: Local Workforce Development System Supporting Data

Section 1.2– Figure 11: Long Term Industry Projections				
Long-Term Industry Projections for North Central WDA (2018-28)				
Industry	Employment (2018)	Projected Employment (2028)	Employment Change (2018-28)	
			Volume	Percent
Total Jobs	91,460	92,000	540	0.6%
Goods Producing Industries	23,900	23,000	-900	-3.8%
Agriculture, Mining & Logging	3,130	3,110	-20	-0.6%
Construction	2,570	2,700	130	5.1%
Manufacturing	18,200	17,210	-990	-5.4%
Services-Providing	62,150	63,180	1,030	1.7%
Trade, Transportation & Utilities	16,540	16,340	-200	-1.2%
Information	900	780	-120	-13.3%
Financial Activities	1,960	1,900	-60	-3.1%
Professional & Business Services	4,810	4,940	130	2.7%
Education & Health Services	21,040	22,420	1,380	6.6%
Leisure & Hospitality	5,970	6,250	280	4.7%
Other Services, Except Public Admin.	4,640	4,500	-140	-3.0%
Federal, State & Local Government	6,320	6,070	-250	-4.0%
Self-Employed Workers	5,410	5,820	410	7.6%
Source: Long-Term Industry Employment Projections (2018-28)				
*Data may not add due confidentiality				

Attachment 4: Local Workforce Development System Supporting Data

Section 1.2 Figure 12 – Fastest Growing Industries by Volume Change and Percent Change

Industry Title	Employment Change (Volume)	Industry Title	Employment Change (Percent)
Self-Employed Workers	410	Home Health Care Services	33.8%
Individual & Family Services	390	Oil & Gas Extraction	18.5%
Restaurants & Other Eating Places	260	Community Care Facility for the Elderly	18.5%
Home Health Care Services	260	Individual & Family Services	17.2%
Community Care Facility for the Elderly	170	Offices of Other Health Practitioners	14.8%
Warehousing & Storage	120	Other Ambulatory Health Care Services	11.1%
Elementary & Secondary Schools	120	Utility System Construction	10.3%
Offices of Physicians	100	Warehousing & Storage	9.4%
Offices of Other Health Practitioners	90	Offices of Physicians	9.1%
Residential Mental Health Facilities	70	Residential Mental Health Facilities	8.3%
Support Activities for Mining	60	Self-Employed Workers	7.6%
Oil & Gas Extraction	50	Restaurants & Other Eating Places	6.2%
Utility System Construction	40	Support Activities for Mining	5.5%
Other Ambulatory Health Care Services	40	Building Equipment Contractors	4.5%
Gasoline Stations	40	School & Employee Bus Transportation	3.2%
Truck Transportation	40	Other Amusement & Recreation Industries	3.0%
Building Equipment Contractors	30	Offices of Dentists	2.9%
General Medical & Surgical Hospitals	20	Gasoline Stations	2.8%
School & Employee Bus Transportation	20	Employment Services	2.5%
Employment Services	20	Elementary & Secondary Schools	2.4%
Source: Long-Term Industry Employment Projections (2018-28)			

Attachment 4: Local Workforce Development System Supporting Data

Section 1.5 – Figure 13 Industry Clusters

Industry Cluster Statistics for North Central WDA						
Cluster Name	2019 Employment	Percent of WDA Employment	Employment Growth (2014-2019)	Percent Growth (2014-2019)	2019 Average Wage	2019 National Location Quotient
Agriculture and Food Production	1,244	1.51%	326	35.5	34,751	.42
Advanced Manufacturing	13,944	16.89%	537	4.0%	\$48,898	2.28
Building and Construction	4,967	6.01%	160	3.3%	\$44,207	.88
Bio Medical	54	.07%	27	100%	\$31,303	..06
Business Services	4,383	5.31%	376	9.4%	\$49,094	.42
Education	6,923	8.38%	-764	-9.9%	\$38,818	.88
Energy	4,114	4.98%	-1,384	-25.25%	\$64,851	2.44
Healthcare and Social Assistance	14,798	17.92%	-2	0.0%	\$45,182	1.19
Hospitality, Leisure and Entertainment	6,545	7.93%	280	4.5%	\$14,176	.64
Logistics and Transportation	3,958	4.79%	93	2.4%	\$48,353	1.22
Real Estate, Finance and Insurance	2,138	2.59%	-66	-3.0%	\$50,000	.47
Wood, Wood Products and Publishing	3,259	3.95%	-114	-3.4%	\$45,926	2.91

Source – Center for Workforce Information and Analysis